



ESR-192

Wireless Probe Type
Ultrasound Scanner



IMAGING SYSTEMS



ESR-192

Features:

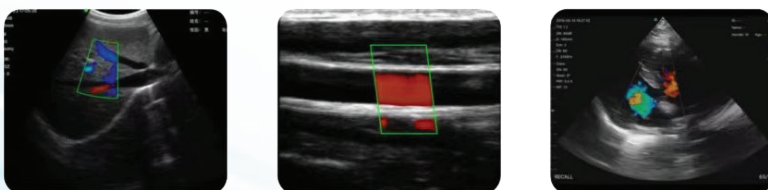
- Advanced digital imaging technology, clear image
- High cost-effective
- Small and small size, easy to carry
- Wireless type without probe cable. working freely.
- Waterproof design, convenient for sterilization.
- Remote diagnostic convenience, capability and easy image transfer

Standard Configuration:

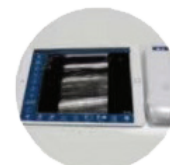
- Wireless probe device 1 Unit
- Built-in Battery and charge cable 1 Set
- User Manual copy

Specifications:

- * Scan mode: Electronic Array, convex with cardiac namely phased array or linear array scanning
- * Frequency; convex probe 3.5/5MHz, linear probe 7.5/10MHz
- * Elements: 192 elements
- * Scanning Depth: Convex 90-305mm, Linear 20-100mm, adjustable
- * Field of view: Micro-Convex R60, Linear L40
- * Screen: Smart phone or tablet screen
- * Supporting system: iOS, Android, Windows
- * Frame rate: 18f/s
- * Image gray scale: 256 level
- * Image/Video Storage: Store on mobile phones, Tablet PC
- * Measure: distance, area, obstetrics and other
- * Power: by built-in lithium battery, 2800mAh
- * Display mode: B, B/M, Color, PDI, PW
- * Battery working time: 3.5 hours
- * Size: 156mm*60mm*20mm
- * Net Weight: 250 gram



Needle puncture guide



Android tablet/iPad



Tablet bracket



Trolley



ESSE3 srl, Via Garibaldi 30
14022 Castelnuovo D.B. (AT)
Tel +39 011 99 27 706
Fax +39 011 99 27 506
e-mail esse3@chierinet.it
web: www.esse3-medical.com

